

- Kingston Formation - Sandstone
- Lower Greensand Group - Sandstone
- Charmouth Mudstone Formation - Mudstone
- Kimmeridge Clay Formation - Siltstone and Sandstone
- Horsehay Sand Formation - Sandstone
- Bladon Member - Mudstone and Limestone, Interbedded
- Whitchurch Sand Formation - Sandstone
- Northampton Sand Formation - Sandstone, Limestone, and Ironstone
- White Limestone Formation - Limestone
- Forest Marble Formation - Limestone and Mudstone, Interbedded
- Stanford Formation - Limestone
- Wheatley Limestone Member - Limestone
- Combrash Formation - Limestone
- Marlstone Rock Formation - Ferruginous Limestone and Ironstone
- Kellaways Sand Member - Sandstone and Siltstone, Interbedded
- Whitby Mudstone Formation - Mudstone
- Amgrove Spiculite Member - Sandstone
- West Walton Formation - Mudstone
- Amphill Clay Formation - Mudstone
- Taynton Limestone Formation - Limestone, Ooidal
- Clypeus Grit Member - Limestone, Ooidal
- Portland Group - Limestone and Calcareous Sandstone
- Beckley Sand Member - Sandstone
- Hazelbury Bryan Formation - Sandstone, Siltstone and Mudstone
- Littlemore Member - Limestone and Mudstone, Interbedded
- Temple Cowley Member - Sandstone and Siltstone, Interbedded
- Dyrham Formation - Siltstone and Mudstone, Interbedded
- Forest Marble Formation - Limestone
- White Limestone Formation - Mudstone
- Kimmeridge Clay Formation - Mudstone
- Amphill Clay Formation and Kimmeridge Clay Formation (Undifferentiated) - Mudstone
- Chipping Norton Limestone Formation - Limestone, Ooidal
- Hampen Formation - Limestone
- Sharp's Hill Formation - Argillaceous Rocks with Subordinate Sandstone and Limestone and Mudstone, Interbedded
- Rutland Formation - Mudstone
- Weymouth Member - Mudstone
- Stewartby Member - Mudstone
- Kellaways Formation and Oxford Clay Formation (Undifferentiated) - Mudstone, Siltstone and Sandstone
- Oxford Clay Formation and West Walton Formation (Undifferentiated) - Mudstone
- Peterborough Member - Mudstone
- Kellaways Clay Member - Mudstone

© 2024 RPS Group
 Notes
 1. This drawing has been prepared in accordance with the scope of RPS's appointment with its client and is subject to the terms and conditions of that appointment. RPS accepts no liability for any use of this document other than by its client and only for the purposes for which it was prepared and provided.
 2. If received electronically it is the recipient's responsibility to print to correct scale. Only written dimensions should be used.

- Legend**
- Order Limits
 - 275kV Cable Route
 - Secondary Substation
 - PCS
 - Cable 33 kv Crossings
 - Installation area
 - 250m cable route buffer
 - Installation area 1km buffer

Rev	Description	By	CB	Date



PHOTOVOLT
DEVELOPMENT PARTNERS



RPS
A TETRA TECH COMPANY

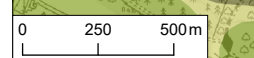
Client PVDP
 Project Botley West Solar Farm
 Title BGS 1:50,000 Bedrock Geology - North

Status **FINAL** Drawn By JM PM/Checked By TJ
 Drawing Number EN010147/APP/6.4 Scale @ A3 1:25,000 Date Created NOV 2024

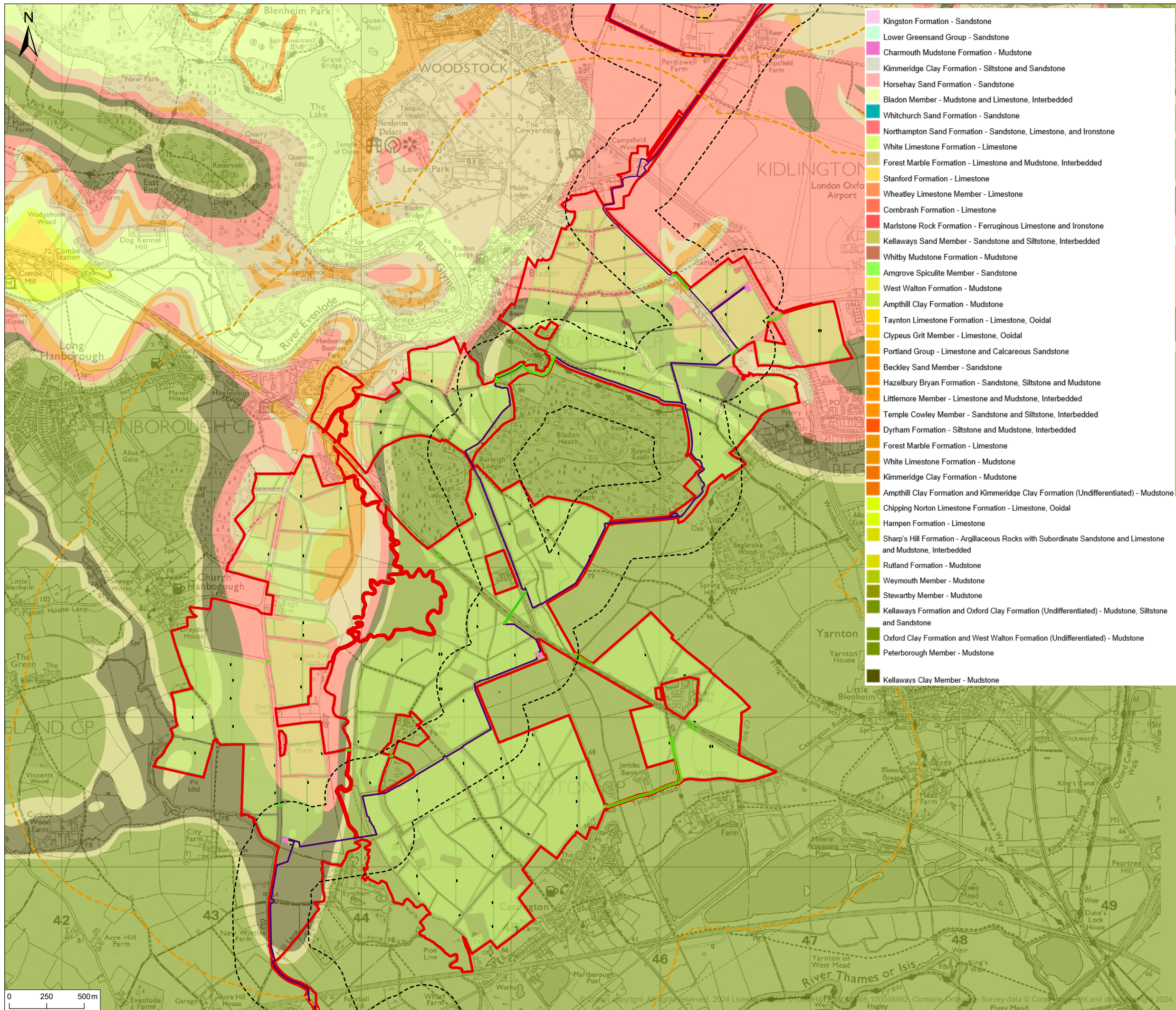
Figure Number **10.6a** Rev -

rpsgroup.com
 20 Western Avenue, Milton Park, Abingdon, Oxfordshire, OX14 4SH
 T: +44(0)1235 821 888 E: rps@rpsgroup.com

P:\eur-mpfs-02.eur.rpsgroup.com\Projects\12426 Proposed DCO Scale Solar Development 860mw\Tech\Drawings\12426-0175-02.aprx



Copyright © 2024 Ordnance Survey. All rights reserved. License number 0100031873/0001994. Ordnance Survey data © Crown copyright and database right 2024.



© 2024 RPS Group
 Notes
 1. This drawing has been prepared in accordance with the scope of RPS's appointment with its client and is subject to the terms and conditions of that appointment. RPS accepts no liability for any use of this document other than by its client and only for the purposes for which it was prepared and provided.
 2. If received electronically it is the recipient's responsibility to print to correct scale. Only written dimensions should be used.

- Legend**
- Order Limits
 - 275kV Cable Route
 - Secondary Substation
 - PCS
 - Cable 33 kv Crossings
 - Installation area
 - 250m cable route buffer
 - Installation area 1km buffer

- Kingston Formation - Sandstone
- Lower Greensand Group - Sandstone
- Charmouth Mudstone Formation - Mudstone
- Kimmeridge Clay Formation - Siltstone and Sandstone
- Horsehay Sand Formation - Sandstone
- Bladon Member - Mudstone and Limestone, Interbedded
- Whitchurch Sand Formation - Sandstone
- Northampton Sand Formation - Sandstone, Limestone, and Ironstone
- White Limestone Formation - Limestone
- Forest Marble Formation - Limestone and Mudstone, Interbedded
- Stanford Formation - Limestone
- Wheatley Limestone Member - Limestone
- Combrash Formation - Limestone
- Marlstone Rock Formation - Ferruginous Limestone and Ironstone
- Kellaways Sand Member - Sandstone and Siltstone, Interbedded
- Whitby Mudstone Formation - Mudstone
- Amgrove Spiculite Member - Sandstone
- West Walton Formation - Mudstone
- Amphill Clay Formation - Mudstone
- Taynton Limestone Formation - Limestone, Ooidal
- Clypeus Grit Member - Limestone, Ooidal
- Portland Group - Limestone and Calcareous Sandstone
- Beckley Sand Member - Sandstone
- Hazelbury Bryan Formation - Sandstone, Siltstone and Mudstone
- Littlemore Member - Limestone and Mudstone, Interbedded
- Temple Cowley Member - Sandstone and Siltstone, Interbedded
- Dyrham Formation - Siltstone and Mudstone, Interbedded
- Forest Marble Formation - Limestone
- White Limestone Formation - Mudstone
- Kimmeridge Clay Formation - Mudstone
- Amphill Clay Formation and Kimmeridge Clay Formation (Undifferentiated) - Mudstone
- Chipping Norton Limestone Formation - Limestone, Ooidal
- Hampen Formation - Limestone
- Sharp's Hill Formation - Argillaceous Rocks with Subordinate Sandstone and Limestone and Mudstone, Interbedded
- Rutland Formation - Mudstone
- Weymouth Member - Mudstone
- Stewartby Member - Mudstone
- Kellaways Formation and Oxford Clay Formation (Undifferentiated) - Mudstone, Siltstone and Sandstone
- Oxford Clay Formation and West Walton Formation (Undifferentiated) - Mudstone
- Peterborough Member - Mudstone
- Kellaways Clay Member - Mudstone

Rev	Description	By	CB	Date



PHOTOVOLT
DEVELOPMENT PARTNERS



RPS
A TETRA TECH COMPANY

Client PVDP

Project Botley West Solar Farm

Title BGS 1:50,000 Bedrock Geology - Central

Status **FINAL** Drawn By JM PM/Checked By TJ

Drawing Number EN010147/APP/6.4 Scale @ A3 1:24,000 Date Created NOV 2024

Figure Number **10.6b** Rev -

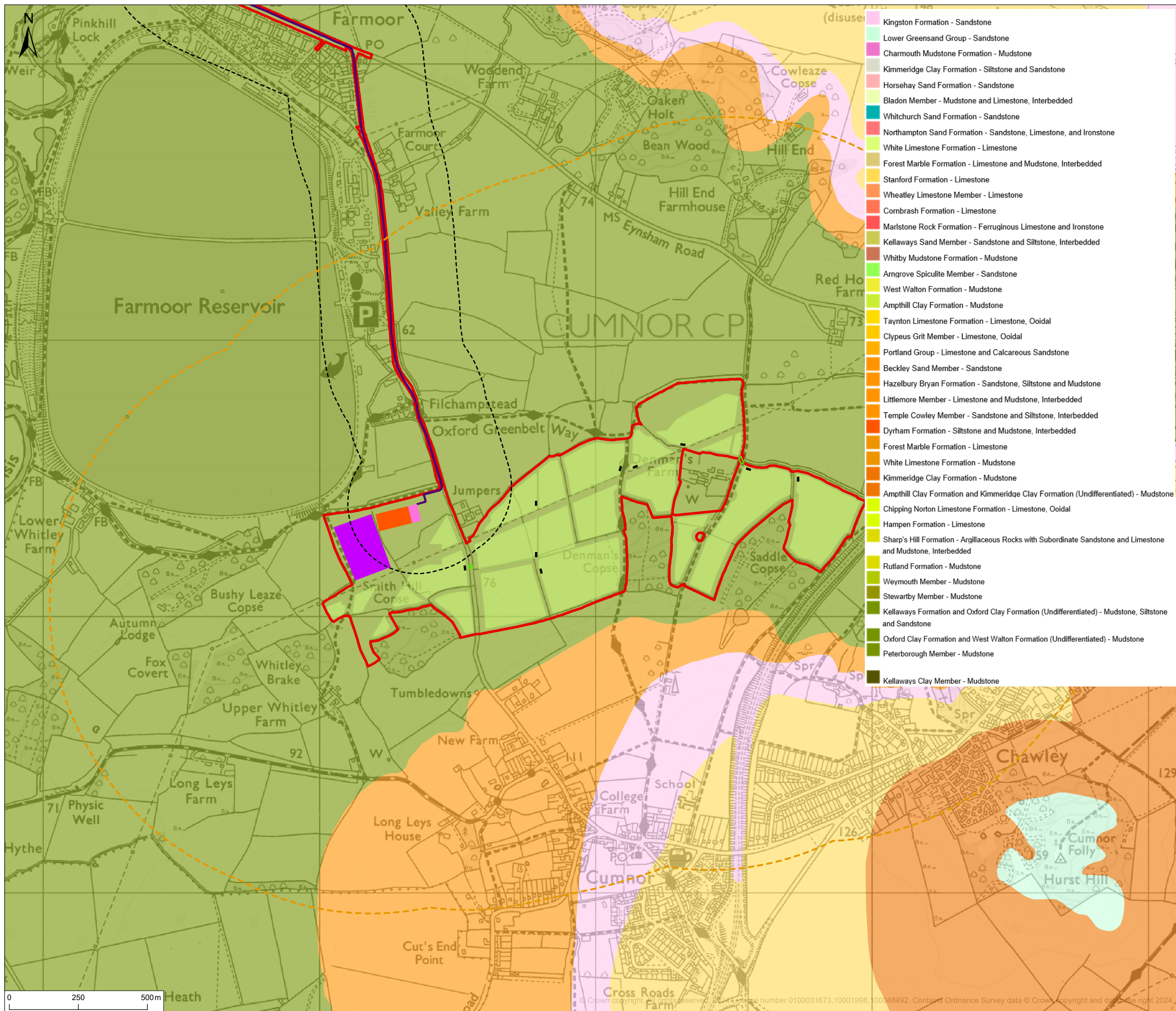
rpsgroup.com
 20 Western Avenue, Milton Park, Abingdon, Oxfordshire, OX14 4SH
 T: +44(0)1235 821 888 E: rps@rpsgroup.com

P:\eur-mpfs-02.eur.rpsgroup.com\Projects\12426 Proposed DCO Scale Solar Development 860mw\Tech\Drawings\12426-0175-02.aprx



© Crown Copyright. All rights reserved. 2024 License number 01089346 FB/1600/1698-100048492 Contains Ordnance Survey data © Crown Copyright and database right 2024.

P:\eur-mpfs-02.eur.rpsgroup.com\Projects\12426 Proposed DCO Scale Solar Development 860mw\Tech\Drawings\12426-0175-02.aprx



- Kingston Formation - Sandstone
- Lower Greensand Group - Sandstone
- Charmouth Mudstone Formation - Mudstone
- Kimmeridge Clay Formation - Siltstone and Sandstone
- Horsehay Sand Formation - Sandstone
- Bladon Member - Mudstone and Limestone, Interbedded
- Whitchurch Sand Formation - Sandstone
- Northampton Sand Formation - Sandstone, Limestone, and Ironstone
- White Limestone Formation - Limestone
- Forest Marble Formation - Limestone and Mudstone, Interbedded
- Stanford Formation - Limestone
- Wheatley Limestone Member - Limestone
- Combrash Formation - Limestone
- Marlstone Rock Formation - Ferruginous Limestone and Ironstone
- Kellaways Sand Member - Sandstone and Siltstone, Interbedded
- Whitby Mudstone Formation - Mudstone
- Amgrove Spiculite Member - Sandstone
- West Walton Formation - Mudstone
- Amphill Clay Formation - Mudstone
- Taynton Limestone Formation - Limestone, Ooidal
- Clypeus Grit Member - Limestone, Ooidal
- Portland Group - Limestone and Calcareous Sandstone
- Beckley Sand Member - Sandstone
- Hazelbury Bryan Formation - Sandstone, Siltstone and Mudstone
- Littlemore Member - Limestone and Mudstone, Interbedded
- Temple Cowley Member - Sandstone and Siltstone, Interbedded
- Dyrham Formation - Siltstone and Mudstone, Interbedded
- Forest Marble Formation - Limestone
- White Limestone Formation - Mudstone
- Kimmeridge Clay Formation - Mudstone
- Amphill Clay Formation and Kimmeridge Clay Formation (Undifferentiated) - Mudstone
- Chipping Norton Limestone Formation - Limestone, Ooidal
- Hampen Formation - Limestone
- Sharp's Hill Formation - Argillaceous Rocks with Subordinate Sandstone and Limestone and Mudstone, Interbedded
- Rutland Formation - Mudstone
- Weymouth Member - Mudstone
- Stewartby Member - Mudstone
- Kellaways Formation and Oxford Clay Formation (Undifferentiated) - Mudstone, Siltstone and Sandstone
- Oxford Clay Formation and West Walton Formation (Undifferentiated) - Mudstone
- Peterborough Member - Mudstone
- Kellaways Clay Member - Mudstone

© 2024 RPS Group
 Notes
 1. This drawing has been prepared in accordance with the scope of RPS's appointment with its client and is subject to the terms and conditions of that appointment. RPS accepts no liability for any use of this document other than by its client and only for the purposes for which it was prepared and provided.
 2. If received electronically it is the recipients responsibility to print to correct scale. Only written dimensions should be used.

- Legend**
- Order Limits
 - 275kV Cable Route
 - Secondary Substation
 - Main Substation
 - NG Substation
 - PCS
 - Cable 33 kv Crossings
 - Installation area
 - 250m cable route buffer
 - Installation area 1km buffer

Rev	Description	By	CB	Date



PHOTOVOLT
DEVELOPMENT PARTNERS



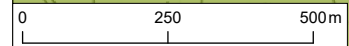
RPS
A TETRA TECH COMPANY

Client PVDP
 Project Botley West Solar Farm
 Title BGS 1:50,000 Bedrock Geology - South

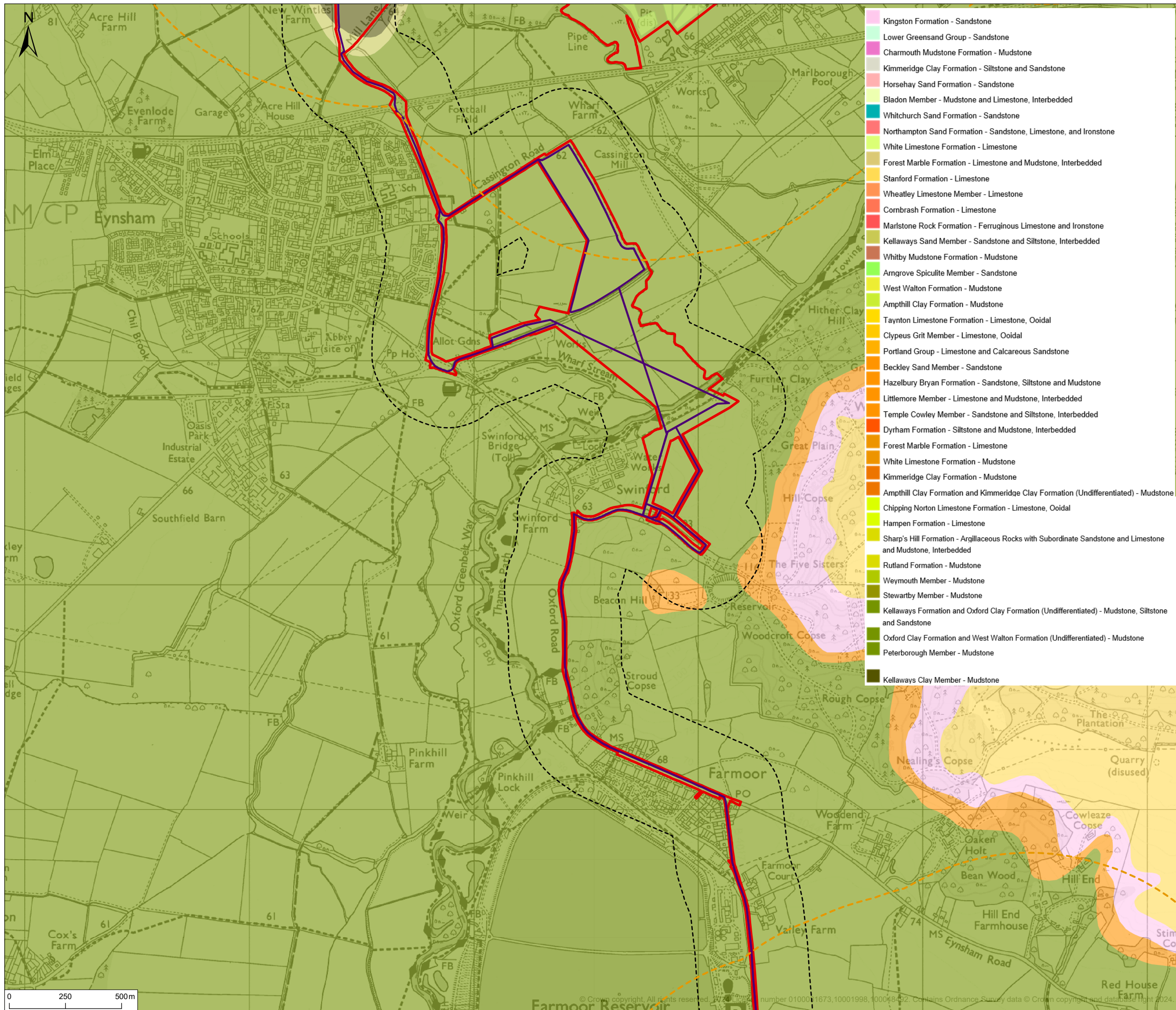
Status **FINAL** Drawn By JM PM/Checked By TJ
 Drawing Number EN010147/APP/6.4 Scale @ A3 1:13,000 Date Created NOV 2024

Figure Number **10.6c** Rev -

rpsgroup.com
 20 Western Avenue, Milton Park, Abingdon, Oxfordshire, OX14 4SH
 T: +44(0)1235 821 888 E: rps@rpsgroup.com



© Crown copyright. All rights reserved. Ordnance Survey Licence number 0100031673, 10001998, 100048492. Contains Ordnance Survey data © Crown copyright and database right 2024.



- Kingston Formation - Sandstone
- Lower Greensand Group - Sandstone
- Charmouth Mudstone Formation - Mudstone
- Kimmeridge Clay Formation - Siltstone and Sandstone
- Horsehay Sand Formation - Sandstone
- Bladon Member - Mudstone and Limestone, Interbedded
- Whitchurch Sand Formation - Sandstone
- Northampton Sand Formation - Sandstone, Limestone, and Ironstone
- White Limestone Formation - Limestone
- Forest Marble Formation - Limestone and Mudstone, Interbedded
- Stanford Formation - Limestone
- Wheatley Limestone Member - Limestone
- Combrash Formation - Limestone
- Marlstone Rock Formation - Ferruginous Limestone and Ironstone
- Kellaways Sand Member - Sandstone and Siltstone, Interbedded
- Whitby Mudstone Formation - Mudstone
- Amgrove Spiculite Member - Sandstone
- West Walton Formation - Mudstone
- Amphill Clay Formation - Mudstone
- Taynton Limestone Formation - Limestone, Ooidal
- Clypeus Grit Member - Limestone, Ooidal
- Portland Group - Limestone and Calcareous Sandstone
- Beckley Sand Member - Sandstone
- Hazelbury Bryan Formation - Sandstone, Siltstone and Mudstone
- Littlemore Member - Limestone and Mudstone, Interbedded
- Temple Cowley Member - Sandstone and Siltstone, Interbedded
- Dyrham Formation - Siltstone and Mudstone, Interbedded
- Forest Marble Formation - Limestone
- White Limestone Formation - Mudstone
- Kimmeridge Clay Formation - Mudstone
- Amphill Clay Formation and Kimmeridge Clay Formation (Undifferentiated) - Mudstone
- Chipping Norton Limestone Formation - Limestone, Ooidal
- Hampen Formation - Limestone
- Sharp's Hill Formation - Argillaceous Rocks with Subordinate Sandstone and Limestone and Mudstone, Interbedded
- Rutland Formation - Mudstone
- Weymouth Member - Mudstone
- Stewartby Member - Mudstone
- Kellaways Formation and Oxford Clay Formation (Undifferentiated) - Mudstone, Siltstone and Sandstone
- Oxford Clay Formation and West Walton Formation (Undifferentiated) - Mudstone
- Peterborough Member - Mudstone
- Kellaways Clay Member - Mudstone

© 2024 RPS Group
 Notes
 1. This drawing has been prepared in accordance with the scope of RPS's appointment with its client and is subject to the terms and conditions of that appointment. RPS accepts no liability for any use of this document other than by its client and only for the purposes for which it was prepared and provided.
 2. If received electronically it is the recipients responsibility to print to correct scale. Only written dimensions should be used.

- Legend**
- Order Limits
 - 275kV Cable Route
 - Installation area
 - 250m cable route buffer
 - Installation area 1km buffer

Rev	Description	By	CB	Date



PHOTOVOLT
DEVELOPMENT PARTNERS



RPS
A TETRA TECH COMPANY

Client PVDP
 Project Botley West Solar Farm
 Title BGS 1:50,000 Bedrock Geology - Cable Route

Status **FINAL** Drawn By JM PM/Checked By TJ
 Drawing Number EN010147/APP/6.4 Scale @ A3 1:16,000 Date Created NOV 2024

Figure Number **10.6d** Rev -

rpsgroup.com
 20 Western Avenue, Milton Park, Abingdon, Oxfordshire, OX14 4SH
 T: +44(0)1235 821 888 E: rps@rpsgroup.com

P:\eur-mpfs-02.eur.rpsgroup.com\Projects\12426 Proposed DCO Scale Solar Development 860mw\Tech\Drawings\12426-0175-02.aprx

